

**PRECIOUS**  
KRISHNA HILLS



**PRECIOUS**  
**GROUP**  
BUILDING BETTER TOMORROW

**Site Address**

Plot 24A + 24B, Sector 4, Pushpak Nagar, Dapoli, Navi Mumbai.



Precious Krishna Hills  
Location



Maha RERA Registration  
No. P51700033139

**For More Information**

8080 88 9999 | 8080 1155 15 | 981 994 5098

**Architect**  
Atul Patel Architects

**RCC Consultant**  
M.Nandwani Structural Consultant

DISCLAIMER: ALL DRAWINGS, AMENITIES, ETC., SHOWN IN THIS BROCHURE ARE SUBJECT TO CHANGE AS PER THE APPROVAL FROM THE RESPECTIVE AUTHORITIES. THE FINAL DISCRETION REMAINS WITH THE DEVELOPERS.



**PRECIOUS**  
KRISHNA HILLS

YOUR GATEWAY TO

**FUTURE**

WITH BOUNDLESS POSSIBILITIES





PRECIOUS  
KRISHNA HILLS

WELCOME TO YOUR

**FUTURE**

STRATEGICALLY POSITIONED AMIDST A THRIVING HUB OF INNOVATION, SETTING THE STAGE FOR A DYNAMIC TAPESTRY OF FUTURE DEVELOPMENTS.



## Welcome to a living experience

that transcends time and embodies the essence of modernity. Our real estate project is more than just a dwelling; it's a testament to a future-forward lifestyle. Nestled at the intersection of innovation and comfort, each space is meticulously crafted to anticipate and adapt to the evolving needs of tomorrow.





FUTURE LOOKS

# Athletic

● HI-TECH GYM

Our state-of-the-art development featuring a cutting-edge hi-tech gym facility. Nestled within the heart of this meticulously designed community, the gym boasts the latest in fitness technology and equipment, catering to the diverse needs of residents seeking a wellness-centric lifestyle.



FUTURE LOOKS

# Playful

● ROOF TOP PLAY AREA

Featuring an exclusive rooftop play area that elevates the concept of recreational spaces to new heights. Perched atop the architectural masterpiece, this enchanting play area offers panoramic views of the cityscape, creating a unique and stimulating environment for residents of all ages.

FUTURE LOOKS **Convenient**

UPCOMING INTERNATIONAL AIRPORT

Nestled in the heart of this dynamic development, residents will enjoy the unparalleled convenience of seamless travel, as the airport promises to be a gateway to global destinations. This prime location not only ensures effortless access to international travel but also positions the community as a hub of economic growth and cultural exchange.



FUTURE LOOKS **Connected**

UPCOMING MANKHURD- VASHI - PANVEL METRO

Immerse yourself in the pulse of urban connectivity and unparalleled accessibility with our forward-thinking real estate project, strategically situated along the route of the upcoming metro line. As the city gears up for an enhanced public transportation network



**M.T.H.L**  
MUMBAI TRANS HARBOUR LINK,

The Mumbai Trans Harbour Link, officially named as Shri Atal Bihari Vajpayee Trans Harbour Link and also known as Sewri-Nhava Sheva Trans Harbour Link and colloquially as Atal Setu, is a 21.8 km (13.5 mi) 6-lane elevated highway bridge, which connects Mumbai with Navi Mumbai, its satellite city. It is the longest sea bridge in India

**15MIN FROM**  
PRECIOUS KRISHNA HILLS



FUTURE LOOKS

## Restful

● SIT OUT FOR SENIOR CITIZENS

One of the standout features is the dedicated sit-out area tailored to meet the needs of our esteemed senior residents. Nestled within a serene corner of the development, this beautifully landscaped sit-out provides a tranquil oasis where seniors can unwind, socialize, and enjoy the outdoors at their own pace.

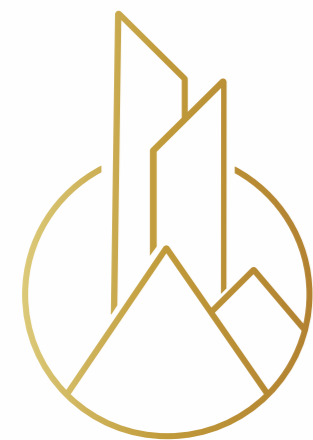
FUTURE LOOKS

## Secure

● CCTV CAMERAS IN PREMISES

Our commitment to providing a secure environment is reflected in the comprehensive surveillance system strategically placed to monitor key areas of the community. Residents can take comfort in knowing that their well-being is a top priority, as the surveillance network not only serves as a deterrent to potential security threats but also ensures a prompt response in case of any untoward incidents.



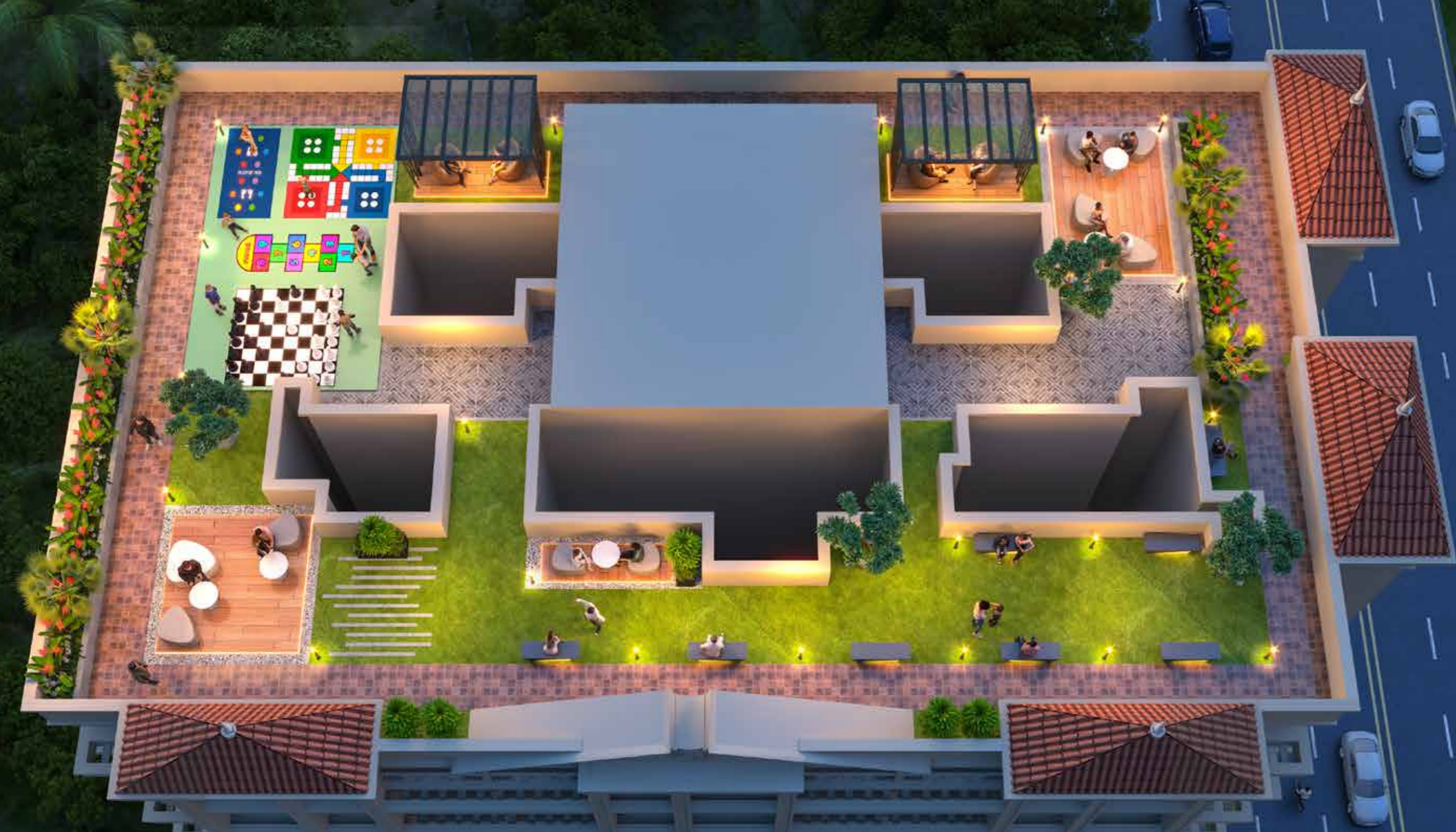


# PRECIOUS KRISHNA HILLS

*Architecting tomorrow's Lifestyle.*

Where innovative designs harmonize with eco-conscious elements, shaping vibrant communities that epitomize modern living at its finest.





# Rooftop

- Play area
- Gazebo
- Sit outs
- Jogging Track

Where thoughtful amenities converge on the rooftop to create a harmonious blend of recreation and relaxation. The rooftop play area, invites families to engage in joyful moments against the backdrop of panoramic views.





## Multilevel Parking

Designed with efficiency and convenience in mind, this parking infrastructure not only addresses the practical needs of residents but also reflects a commitment to optimizing space. Spread across four floors, the parking facility ensures ample space for residents and visitors alike, eliminating the hassles of urban parking.



1BHK UNIT PLAN



2BHK UNIT PLAN



## 1. Project Highlights

- A. CIDCO Clear Plot
- B. Project At Prime Location
- C. G+12 Storey Residential cum Commercial Project with Modern Amenities

## 2. Project Specification

### A. Structure

- Earthquake Resistant R.C.C. Designed Construction With Attractive Elevations

### B. Flooring

- 24”X48” / 32”X32” Vitrified Flooring
- Anti-Skid Tiles in Bathroom
- Special Bricks-Bed Waterproofing Treatment
- China Mozaic tiles on terrace

### C. Kitchen

- Granite Kitchen Platform with Stainless Steel Sink
- Ceramic Tiles Dado above Kitchen Platform upto Beam Level
- Service Platform for 2BHK
- Provision for Water Purifier, Microwave and Fridge Point in Kitchen

### D. Electrical Fittings

- Concealed Electrical Fittings For Entire Flat
- Branded Modular Switches.
- Concealed Copper Wiring (POLYCAB/RR or Equivalent) With Branded Electrical Fittings (ISI MARK)
- Provision for Geyser and Aqua-guard points
- AC point in Bedrooms and Living rooms
- Cable/DTH points in Bedrooms and Living rooms

### E. Bathroom/Wc

- Concealed Plumbing
- Premium Quality Sanitary Fittings
- Branded C.P Fittings of Reputable Make
- Hot & Cold Water Diverter
- Wall tiles upto Beam level
- Premium Quality Aluminium Louvres in Bath & WC
- Provision for Geyser Point

### F. Walls & Paints

- Internal Walls with POP / Gypsum finish for Smooth Lustrous Effect
- Acrylic Paints For External Walls
- Premium Quality Luxury Emulsion Paint For Internal Walls
- Full External Body Aesthetic Texture

### G. Doors

- Goods quality flush door with laminate finish for Main door and bedroom door
- Granite frame for Bath & W.C
- Wooden door frames for all rooms
- Main door with branded night latch & decorative handle
- Flush Doors for Bath & WC with Laminate Finish

### H. Windows

- Anodized Aluminum Sliding Windows with reflective glass
- Granite Frame for Windows

### I. Water Storage

- Overhead and Underground Water Tank with Adequate Storage Capacity

### J. General Amenities

- Branded Fully Automatic Elevators and Fire Lift with ARD
- 24\*7 Power Backup For Common Service Areas and Elevator
- CCTV For Added Security In Lobby & common areas
- Advanced Fire Fighting System
- Decorative Entrance Lobby

### K. Lifestyle Amenities

- Society Office
- Hi-Tech Gym
- Rooftop Amenities
- Sit-Outs For Senior Citizens
- Gazebo
- Jogging Track
- Children's Play Area
- 4-Levels Of Ample Parking Spaces with Car Lifts



**CONNECTIVITY FROM  
PRECIOUS KRISHNA HILLS**



**15 Min** From MTHL Trans Harbour Highway



**10 Min** From Upcoming Navi Mumbai International Airport



**10 Min** From Upcoming Mankhurd-Vashi - Panvel Metro



**5 Min** From Upcoming 5 Star Property



**05 Min** From Upcoming School Property



**10 Min** From Panvel & Khandeshwar Railway Station



UPCOMING MANKHURD-VASHI - PANVEL METRO  
RAILWAY LINES  
ROADS & HIGHWAYS